

JETON[®]

ADJUSTABLE
COOLLANT HOSES

HIGH PRESSURE
ADJUSTABLE NOZZLE



JETON[®] R/D & MFG. INC.

No.17, Lane 100, Tsao-Tyi Road. Ta-Li City,
Taichung, Taiwan, R.O.C.

TEL: 886-4-24953456 FAX: 886-4-24953399

<http://www.jeton.com.tw>

E-mail: jetoninc@seed.net.tw

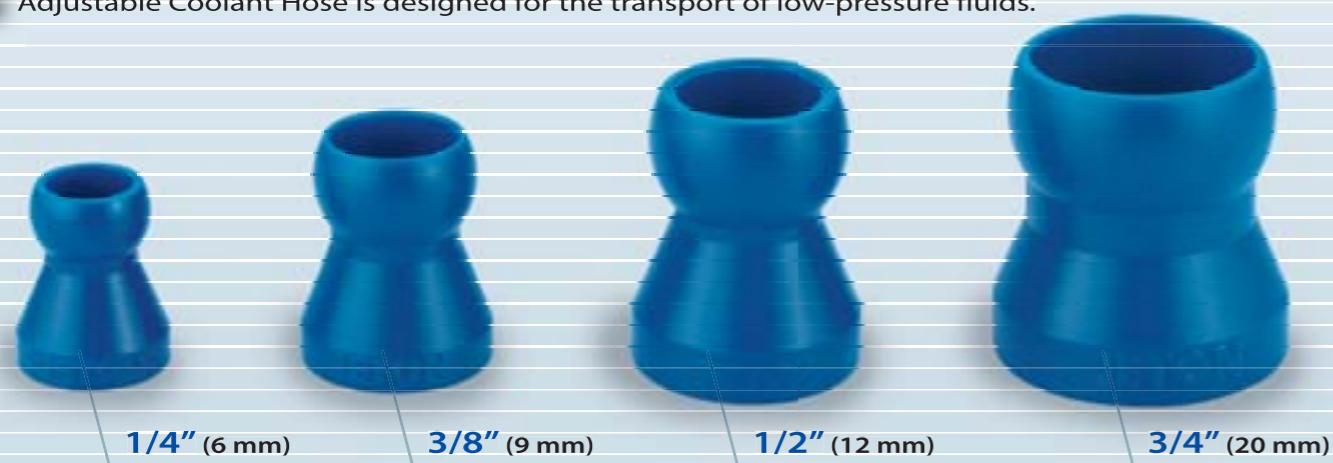
ISO 9001:2000

ADJUSTABLE COOLANT HOSE INTRODUCTION

Length and angle can be freely adjusted, suitable for most fluids (liquids and gases), hose orifice can be changed as needed.

Can be used for air or for water/oil supply to metal processing machinery.

- Made of Dupont 100P material; this highly rigid yet resilient acetal (POM) is strongly resistant to oils and chemicals.
- Adjustable Coolant Hose is highly pliable; it holds its shape well and will not spring back.
- Bending hose will not reduce inner diameter; hose will not pinch or fatigue.
- Adjustable Coolant Hose will not damage cutting blades if there is accidental contact.
- Adjustable Coolant Hose does not conduct electricity and is suitable for use on electrical discharge (EDM) machines.
- Four kinds of orifice inner diameter are available: 1/4", 3/8", 1/2", 3/4"
- Adjustable Coolant Hose is designed for the transport of low-pressure fluids.



Hose Pressure and Flow Characteristics:

1/4" SYSTEM	2.0~3.0 kg/cm ²	900 Liter / hour
3/8" SYSTEM	2.0~3.0 kg/cm ²	1500 Liter / hour
1/2" SYSTEM	1.4~2.0 kg/cm ²	1700 Liter / hour
3/4" SYSTEM	0.7~1.4 kg/cm ²	1900 Liter / hour

Recommended usage:

- When using Adjustable Coolant Hose, changes in the situation may affect the maximum pressure. It is recommended that tests be performed whenever changes are made.

Thermal characteristics:

Melting point 165 °C
Maximum use temperature 65 °C

Adjustable Coolant Hose packaging

Adjustable Coolant Hose is available in cardboard boxes, bags, and coils to meet customers' specific needs.



LIST OF SUITABLE FLUIDS

Ordinary Adjustable Coolant Hoses are manufactured from acetal (POM), Hose is available in dark blue and orange colors.

ITEM	SUITABLE	UNSUITABLE
ALCOHOLS, ETHYL	○	
ACIDS		×
ACETONE	○	
BASES, STRONG		×
AMMONIUM HYDROXIDE (STRONG)		×
COMMERCIAL DISH DETERGENTS	○	
GASOLINE	○	
GREASES	○	
HYPOCHLORITE ION SOLUTIONS		×
LACQUER SOLVENTS	○	
OILS	○	
SODIUM HYDROXIDE	○	
SODIUM HYPOCHLORITE		×
INSECTICIDES	○	
BRAKE OILS	○	



LENGTH CALCULATION METHOD

Adjustable Coolant Hoses Length Calculation Method

Sample calculations

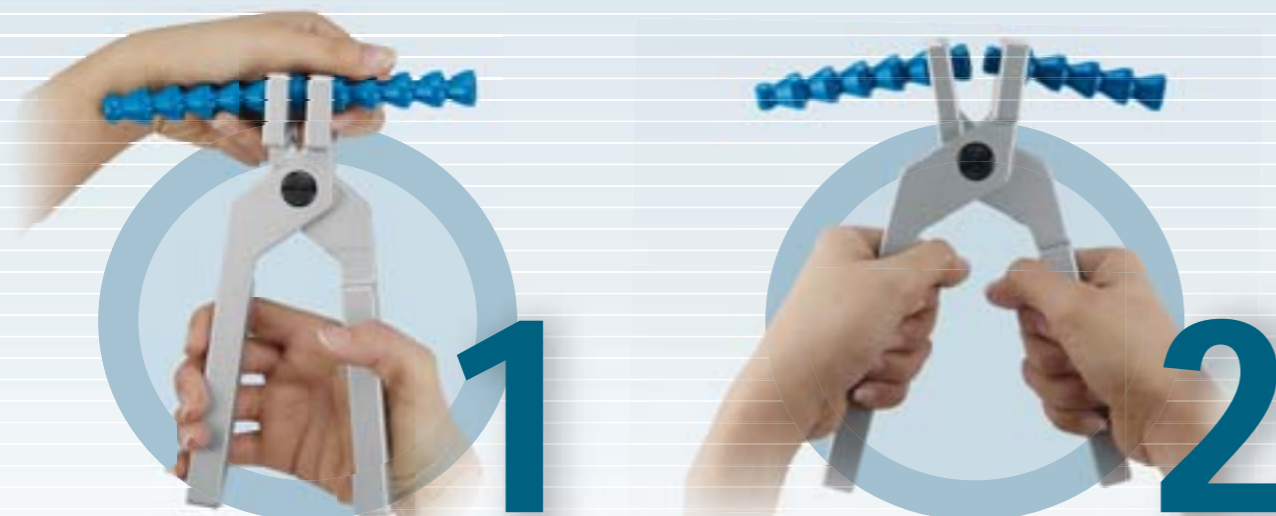


Hose Pressure and Flow Characteristics:

Connector size (A)	Effective hose size (B x Number of interlocking pieces)	Nozzle (C)	Total length
1/4"	20.9 mm + 14.5 mm x Number of hoses	35.2 mm	= Total length
3/8"	25.0 mm + 17.5 mm x Number of hoses	39.2 mm	= Total length
1/2"	29.8 mm + 21.9 mm x Number of hoses	37.8 mm	= Total length
3/4"	30.3 mm + 23.9 mm x Number of hoses	43.0 mm	= Total length

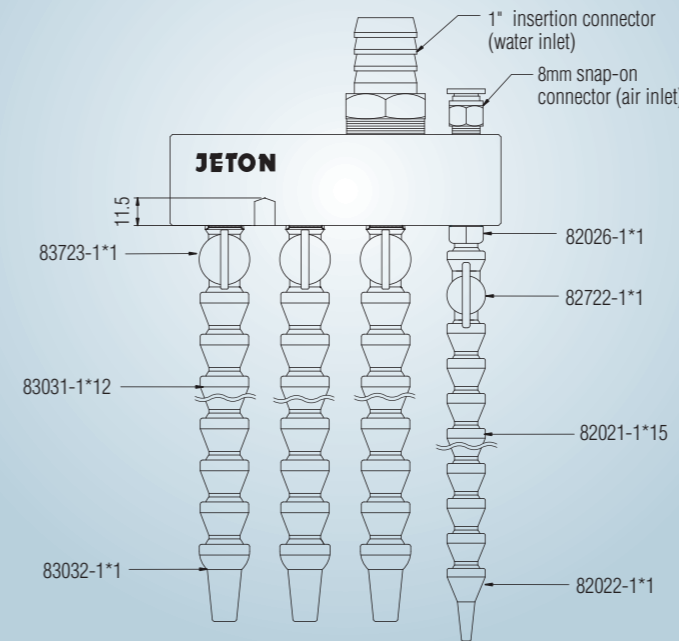
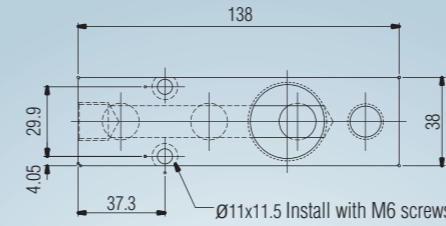
Installation of Adjustable Coolant Hoses

It's simple and easy to install Adjustable Coolant Hoses using the special pliers. The pliers can also be used to take apart the hose.



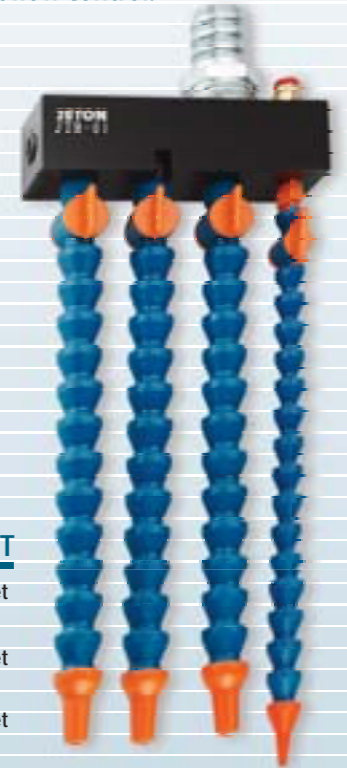
3

TOTAL FLOW CONTROL UNIT



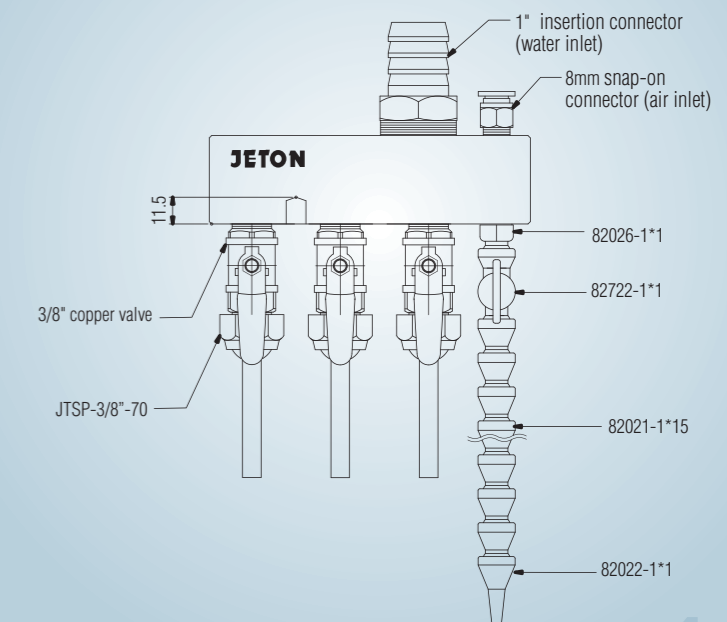
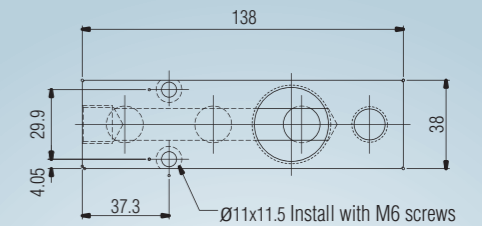
Total Flow Control Unit

The Total Flow Control Unit can be installed on all types of mechanical equipment to control of water flow. It is easy to install and makes machine more aesthetically attractive. Ensures convenient flow control.



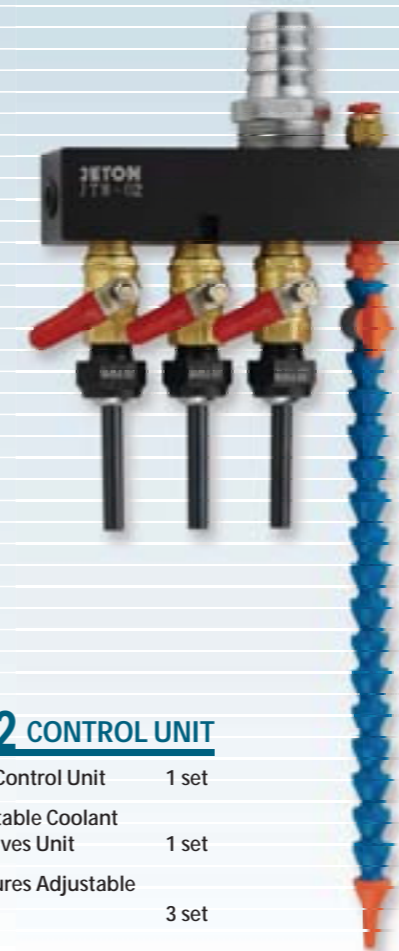
JTM-01 CONTROL UNIT

- Total Flow Control Unit 1 set
- 1/4" Adjustable Coolant Hoses & Valves Unit 1 set
- 3/8" Adjustable Coolant Hoses & Valves Unit 3 set



JTM-02 CONTROL UNIT

- Total Flow Control Unit 1 set
- 1/4" Adjustable Coolant Hoses & Valves Unit 1 set
- High Pressures Adjustable Nozzle 3 set



4

